

Transmission To Public Health Agencies—Health Care Surveys

Note: Please be advised this information is consistent with the 5.9 BETA application version. Additional changes may occur prior to the final application release.

Dot Branhan

2.0

Transmission To Public Health Agencies—Health Care Surveys

- 2015 Edition Certification criterion § 170.315(f)(7)
- Require a Health IT Module to be able to create health care survey information for electronic transmission to public health agencies
- Standards: HL7 Implementation Guide for CDA® Release 2: National Health Care Surveys (NHCS), Release 1—US Realm Draft Standard for Trial Use

Transmission To Public Health Agencies—Health Care Surveys

- You will need to enable the link on NGKBM_Config template

The screenshot shows the NGKBM Config web application interface. The top navigation bar includes tabs for Problems, 06/20/2017 10:52 AM: **Histories**, Procedure Documentation Config, Procedure Config, and Ngkbm Config. The left sidebar contains a navigation menu with items like Configuration Home, Framework Content, Manage Template Links, NGKBM Config, Office Diagnostics, My Plan/Order Sets, DB Picklist Setup, Document Configuration, Picklist Setup, Immunizations, Clinical Guidelines, Template Defaults, Peds Development Setup, OB Education Setup, Recommended Care, Community Resource Setup, Dx Groups/Reference Systems, and Dx User Descriptions. The main content area is a table with three columns: Name, Description, and Options. The 'Health Survey Link' row is highlighted with a red border. The 'Enable Health Survey link' checkbox is checked.

| Name | Description | Options |
|--|---|---|
| Framework Template Set | Removes the ability to disable the launching of the HPI popup. Hide the HPI instructions - Intake and SOAP Show link to the PHQ popup in framework template set Always display the right side history bar. Hide Chronic Conditions Button Intake and SOAP | <input type="checkbox"/> Hide the HPI no launch check-box - Intake and SOAP <input type="checkbox"/> Hide the HPI no launch check-box - SOAP <input type="checkbox"/> Hide the HPI instructions <input checked="" type="checkbox"/> Show PHQ Link <input type="checkbox"/> Display history bar <input type="checkbox"/> Hide Chronic Conditions button |
| Health Survey Link | Displays Health Survey link in left navigation panel | <input checked="" type="checkbox"/> Enable Health Survey link |
| Hide Physician Sign off | Hides supervising physician sign off checkboxes at the bottom of the Finalize template. | <input type="checkbox"/> Hide |
| HIPAA updates via EHR | Checked allows a practice to make updates to HIPAA disclosure in EHR from HIPAA_Disclosure template; unchecked only allows updates from within EPM. | <input type="checkbox"/> Allow updates to HIPAA from EHR |
| Immunizations | Please use ngkbm_immunizations to manage immunization configuration options. | Ngkbm immunizations |
| The Joint Commission Standards | Displays additional fields and popup links to The Joint Commission content for practices required to adhere to the The Joint Commission standards. | <input type="checkbox"/> Enable The Joint Commission requirements |
| Obstetrics Parity auto-calculation | Auto-calculates the parity based on information in the Pregnancy Outcomes (Pregnancy history) grid. | Parity auto-calculation is activated |

Health Care Surveys- Data Elements

- Patient demographics such as date of birth, gender, race and ethnicity
- Vital signs (Height, Weight, Blood Pressure)
- Reason for visit
- Primary diagnoses associated with the visit
- Chronic conditions that the patient has at the time of the visit
- Procedures provided or ordered
- Diagnostic tests ordered or provided

Health Care Surveys- Data Elements

- New or continued medications at the time of the visit
- The Comorbid checkbox added to the Problems Module
- Other variables such as
 - tobacco use
 - whether the provider is the patient's primary care physician
 - how many times the patient has been seen in the practice in the past 12 months
 - which type of providers were seen at the visit
 - visit disposition
 - primary residence in the environmental section on the Social History

Hands On Demo

2.0

Confidential – Proprietary Information. For Use by Authorized NextGen Healthcare Employees Only.
Do Not Distribute. Copyright © 2016 QSI Management, LLC. All Rights Reserved.

NEXTGEN[®]
HEALTHCARE

2.0

Transmission for Syndromic Surveillance

Dot Branhan

2.0

Syndromic Surveillance

- The first thing you need to know is that this is a requirement for Urgent Care and Inpatient Facilities only
- NextGen had to include this functionality for Certification purposes
- The link for Syndromic Surveillance is only available using “**Urgent Care**” as the Specialty with any visit type

Syndromic Surveillance First things First

- What is Syndromic Surveillance?

Syndromic Surveillance is a process that regularly and systematically uses health and health-related data in near "real-time" to make information available on the health of a community.

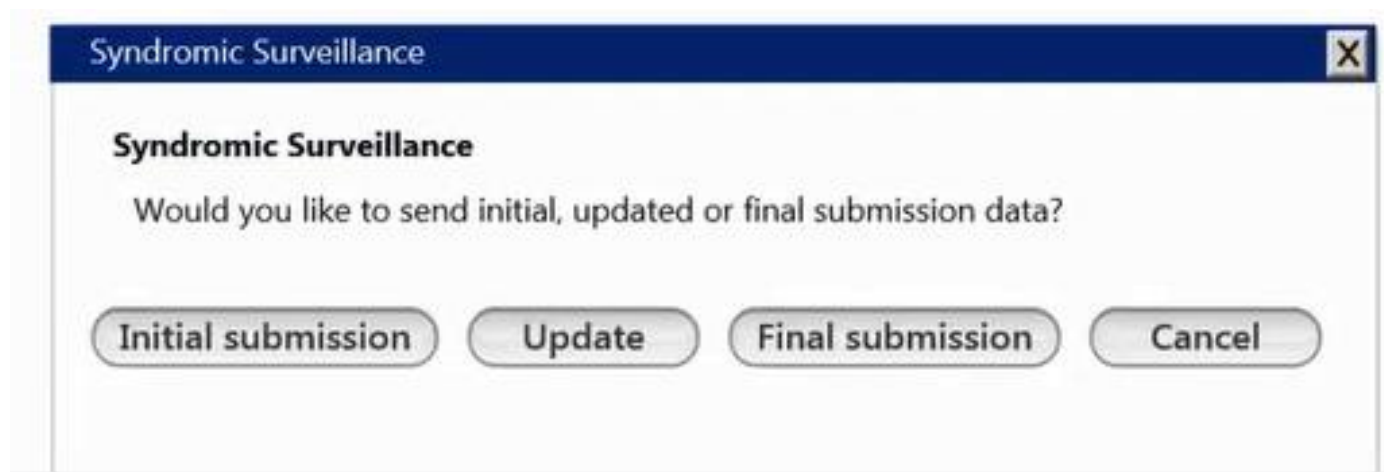
Syndromic surveillance has been used for early detection of outbreaks, to follow the size, spread, and tempo of outbreaks, to monitor disease trends, and to provide reassurance that an outbreak has not occurred.

Syndromic Surveillance

- After an outbreak is detected Syndromic Surveillance also:
 - Syndromic surveillance might help determine the size, spread, and tempo of an outbreak after it is detected.
 - Provide reassurance that a large-scale outbreak is not occurring, particularly in times of enhanced surveillance
 - Syndromic surveillance systems seek to use existing health data in real time to provide immediate analysis and feedback.
 - Finally, syndromic surveillance is beginning to be used to monitor disease trends, which is increasingly possible as longitudinal data are obtained and syndrome definitions refined.

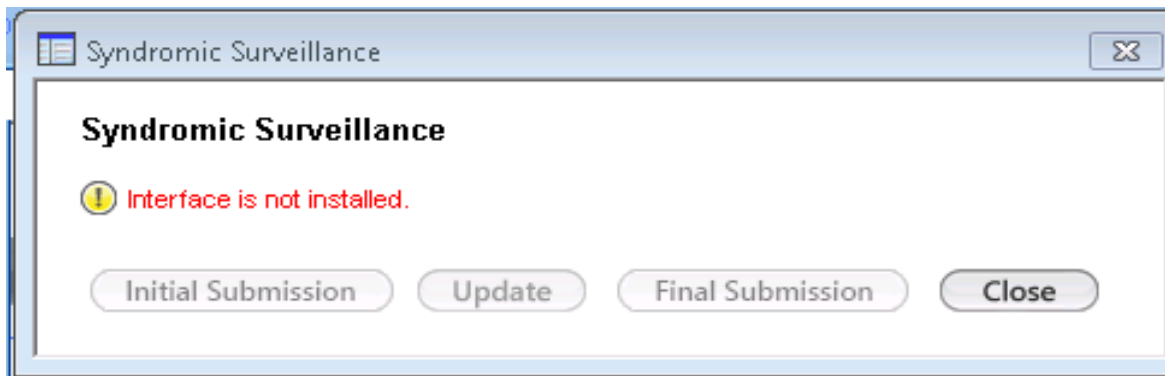
Syndromic Surveillance

- This upgrade for Syndromic Surveillance is all about this pop-up template that was introduced for MU Stage 1



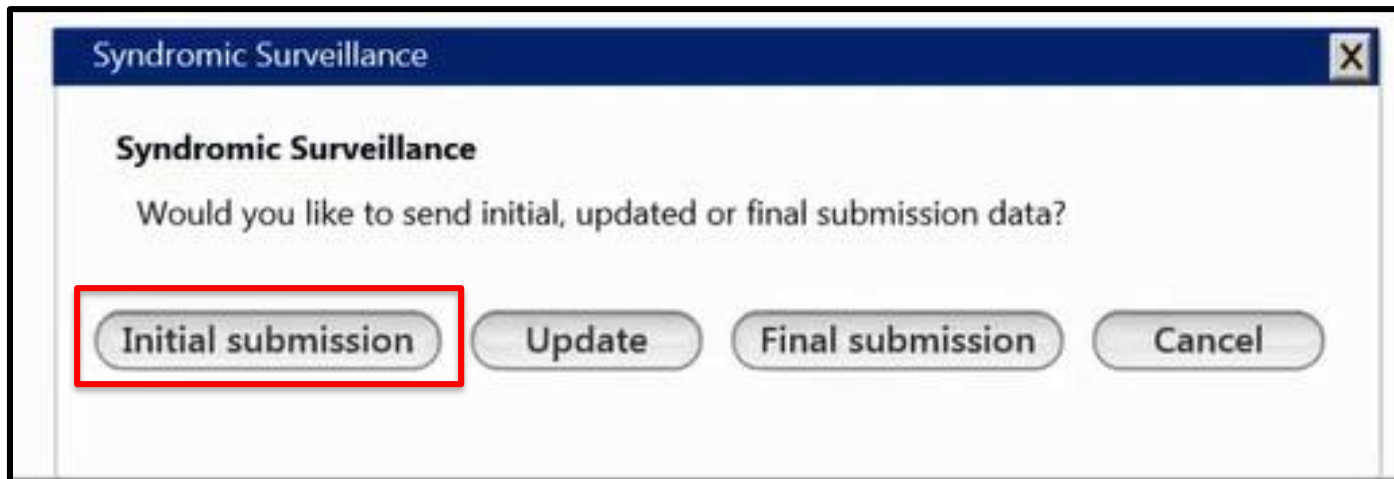
Syndromic Surveillance

- If the Interface is not installed you will see this message when you open the Syndromic Surveillance template & only the Close button is active



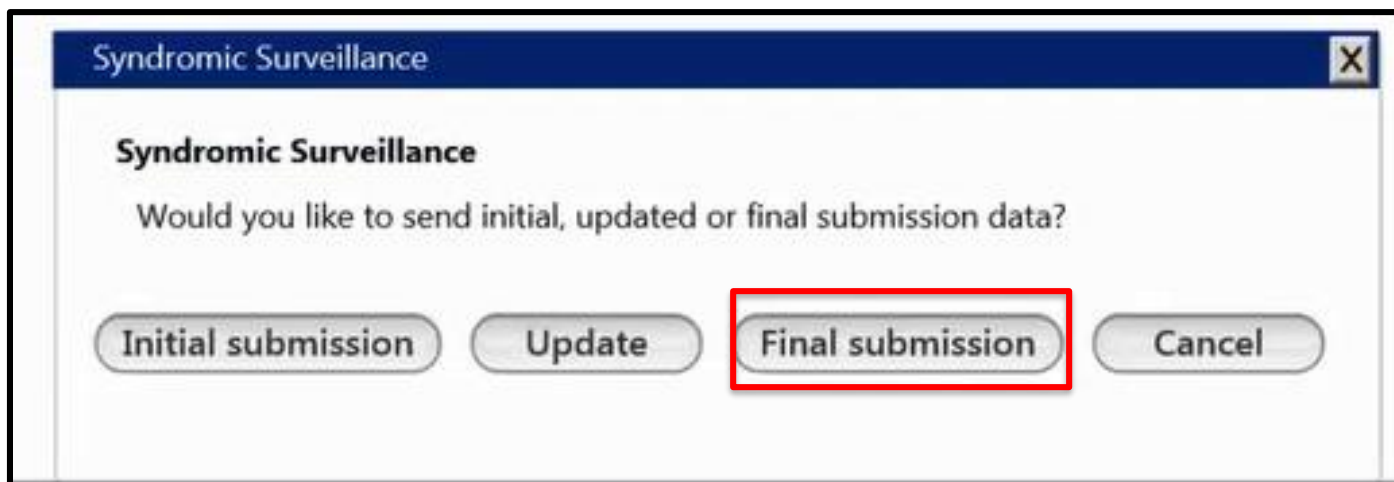
Syndromic Surveillance

- The name of this button was changed from “Admit” to “Initial submission” to more accurately reflect the action that is being taken. If the Initial submission is successful this message will appear “Initial Syndromic surveillance data has been submitted”.



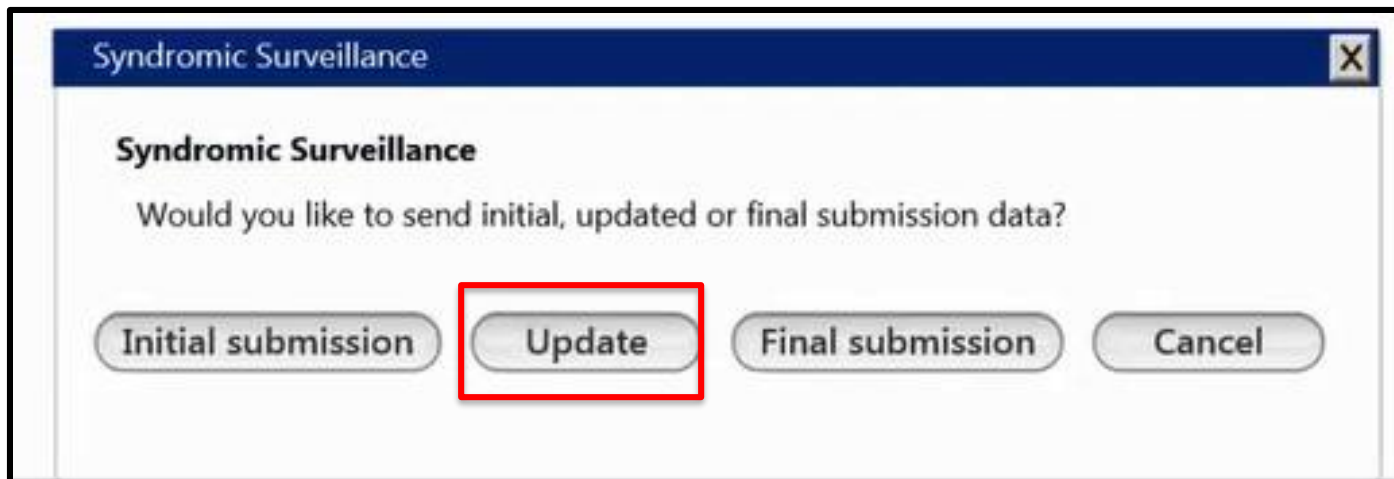
Syndromic Surveillance

- The name of the “Discharge” button has been changed to “Final submission” and can be used at any time, multiple times if necessary



Syndromic Surveillance

- The “Update” button is inactive by default, but will become active after the Initial submission. If the submission is successful, you will receive a message “Updated syndromic surveillance data has been submitted”. If the submission fails a message will appear “Failed to export records, please contact support”



Syndromic Surveillance

- This information is encounter specific and no need to copy from encounter to encounter. You will open the Syndromic Surveillance on any subsequent encounters to send 'new' data for that encounter
- The information sent is not demographic in nature, so no unique identifiers are included

Hands On Demo

2.0

Confidential – Proprietary Information. For Use by Authorized NextGen Healthcare Employees Only.
Do Not Distribute. Copyright © 2016 QSI Management, LLC. All Rights Reserved.

NEXTGEN[®]
HEALTHCARE

2.0

Thank You



Your logo